

Anti-EGFR hIgG1 Reference Antibody (Cetbio)

Product Information

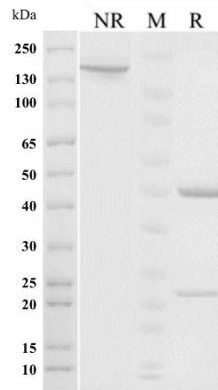
Product Name	Anti-EGFR hIgG1 Reference Antibody (Cetbio)
Storage temp.	Store at 2-8°C short term (1-2 weeks).Store at $\leq -20^{\circ}\text{C}$ long term. Avoid repeated freeze-thaw.
Catalog# / Size	GM-87800MAB-1mg / 1 mg GM-87800MAB-5mg / 5 mg GM-87800MAB-25mg / 5 mg*5 vials GM-87800MAB-50mg / 50 mg GM-87800MAB-100mg / 50 mg*2 vials

Antibody Information

Expression System	CHO
Aggregation	< 5% as determined by SEC-HPLC
Purity	> 95% as determined by SDS-PAGE
Endotoxin	< 1 EU/mg, determined by LAL gel clotting assay
Sterility	0.2 μm Filtered
Target	EGFR
Clone	Cetuximab
Alternative Names	ERBB, ERBB1, ERBB2, HER1, NISBD2, PIG61, mENA
Source/Isotype	Monoclonal human IgG1(KDEL),kappa
Application	Flow cytometry; Bioactivity-ELISA
Description	The protein encoded by this gene is a transmembrane glycoprotein that is a member of the protein kinase superfamily. This protein is a receptor for members of the epidermal growth factor family. EGFR is a cell surface protein that binds to epidermal growth factor, thus inducing receptor dimerization and tyrosine autophosphorylation leading to cell proliferation. Mutations in this gene are associated with lung cancer.
Formulation	phosphate-buffered solution, pH 7.2-7.4.

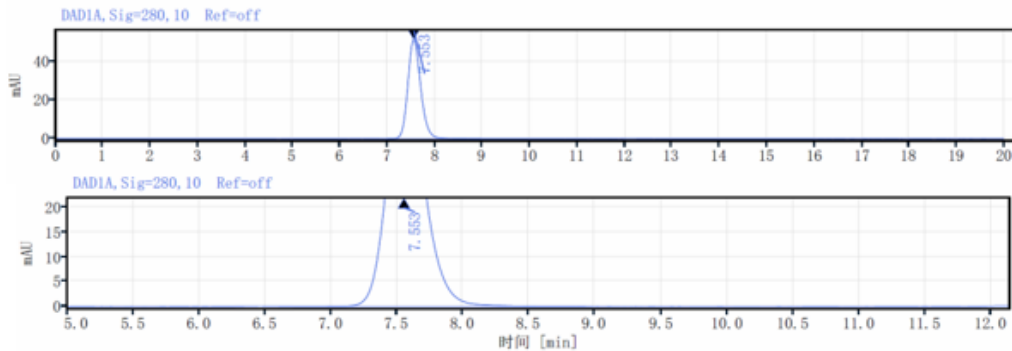
Data Examples

SDS-PAGE



On SDS-PAGE under reducing (R)/non-reducing(N-R) condition. The gel was stained overnight with Coomassie Blue. The purity of the protein is greater than 95%.

SEC-HPLC



The purity of this product is more than 95% verified by SEC-HPLC

Flow cytometry

H_EGFR CHO-K1 Cell Line (Catalog # GM-C19964) was stained with Anti-EGFR hlgG1 Reference Antibody (Cetbio) (Catalog # GM-87800MAB) or isotype control antibody, followed by anti-Human IgG APC-conjugated Secondary Antibody.

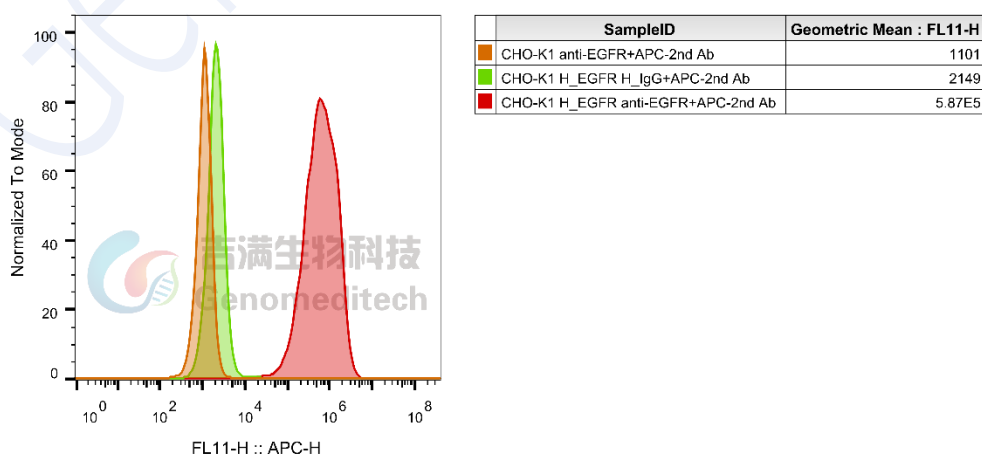


Fig. FACS

Flow cytometry

Cynomolgus_EGFR CHO-K1 Cell Line (Catalog # GM-C21327) was stained with Anti-EGFR hIgG1 Reference Antibody (Cetbio) (Catalog # GM-87800MAB) or isotype control antibody, followed by anti-Human IgG APC-conjugated Secondary Antibody.

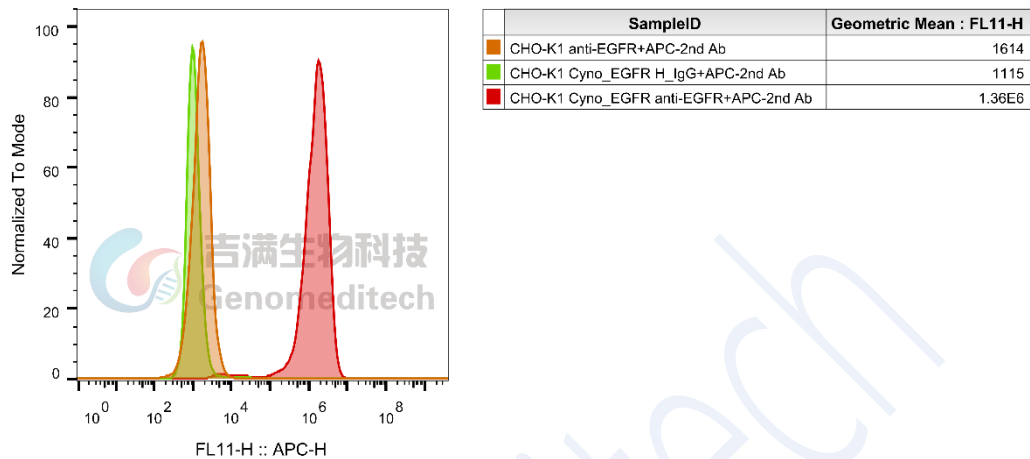


Fig. FACS

Bioactivity-ELISA

Human EGFR Protein; His Tag (Catalog # GM-87561RP) was immobilized at 1 µg/ml (100 µL/well). Increasing concentrations of Anti-EGFR hIgG1 Reference Antibody (Cetbio) (Catalog # GM-87800MAB) were added.

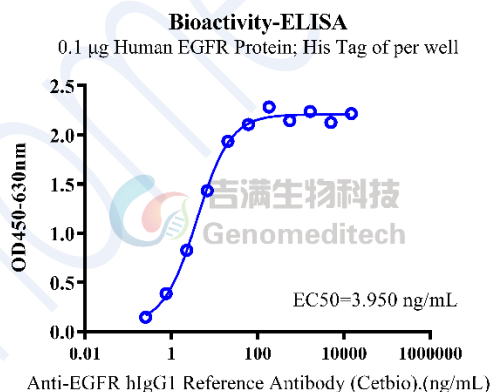


Fig. Assay